

# AIR CONTROL



## PROPORTIONAL AIR CONTROL MULTI SECTION

Hyva

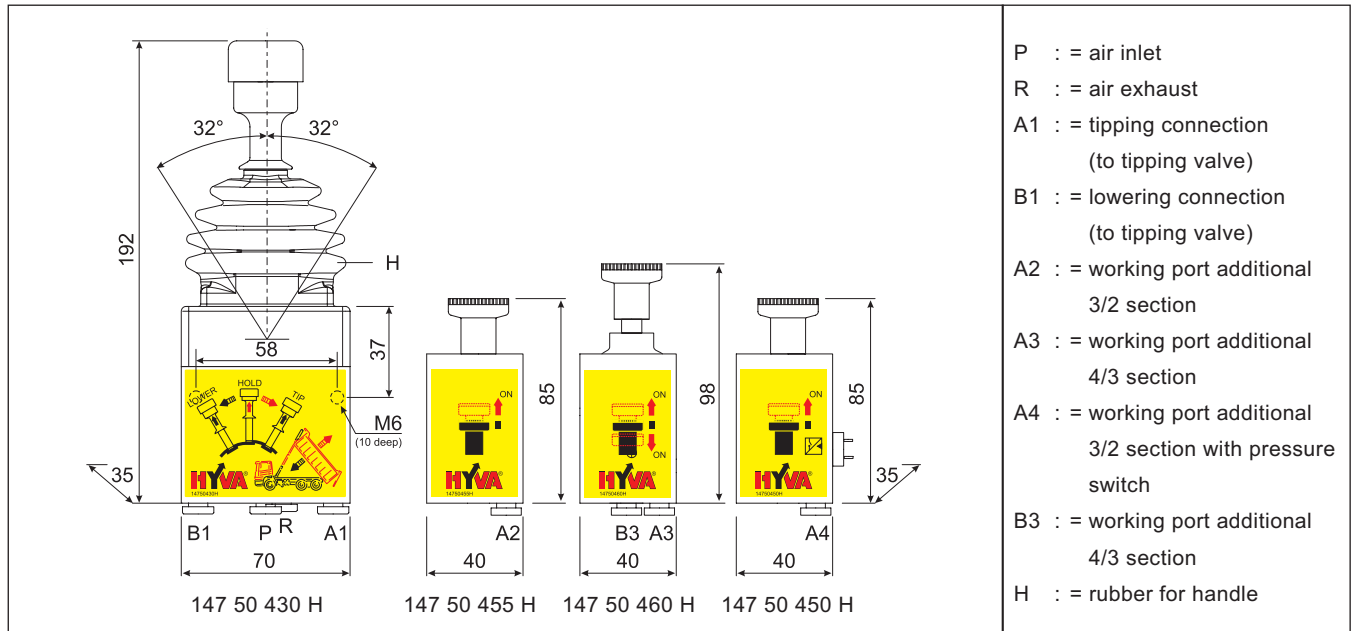
type :

proportional air control MS  
with optional additional sections

page # 1 / 2

part number

147 50 430 H



### General Info

This multi section air control is designed for applications where several functions should be controlled.

The main section 147 50 430 H is a double acting proportional control and can be used where two side movements should be controlled proportional (like tipping valves, main cylinders of hook- or skip loaders, etc.).

The extra section 147 50 460 H is a double acting NOT proportional control and can be used where two side movements should be controlled black/white (like multikap, side doors, etc.)

The extra sections 147 50 450 H and 147 50 455 H are single acting NOT proportional controls and can be used where one side movement should be controlled black/white (like PTO, selector valve, etc.)

### mounting of the air control

1. Connect the air control according to the pneumatic scheme.
2. For trouble free life of the pneumatic system there should be worked with "dry" air.
3. Ensure that air tubes are:
  - Not too close to sharp objects
  - Clear from moving parts
  - Clear from exhaust and compressor lines
  - Not get kinked
  - Not too long
4. Main section has two M6 holes (10 deep) at 58 mm distance to fit the air control in the cabin.
5. 147 50 450 can only mounted as the last in a row.

**note:** The air supply must always be taken from an accessory air tank or auxiliary valve and the pneumatic system must be protected with a charging valve.  
( see guide - lines from truck manufacturer )  
For operation of the air control see the Hyva 'operation and maintenance instructions.'

### order possibilities of the air control

part no.	description	qty
147 50 430 H	air control	1
147 50 450 H	additional 3/2 section with pressure switch	1
147 50 455 H	additional 3/2 section	1
147 50 460 H	additional 4/3 section	1
147 50 511 H	mounting kit for 2 .. 8 extra sections	1

### The mounting kit contains:

- 2 x threaded end M5
- 2 x self locking nut M5

### To order a multi section air control use following order line to check order info

- 1 x 147 50 430 H
- A x 147 50 450 H where A = 0 .. 1
- B x 147 50 455 H where B = 0 .. 8
- C x 147 50 460 H where C = 0 .. 8
- 1 x 147 50 511 H when fitting more than 1 extra section

### specifications

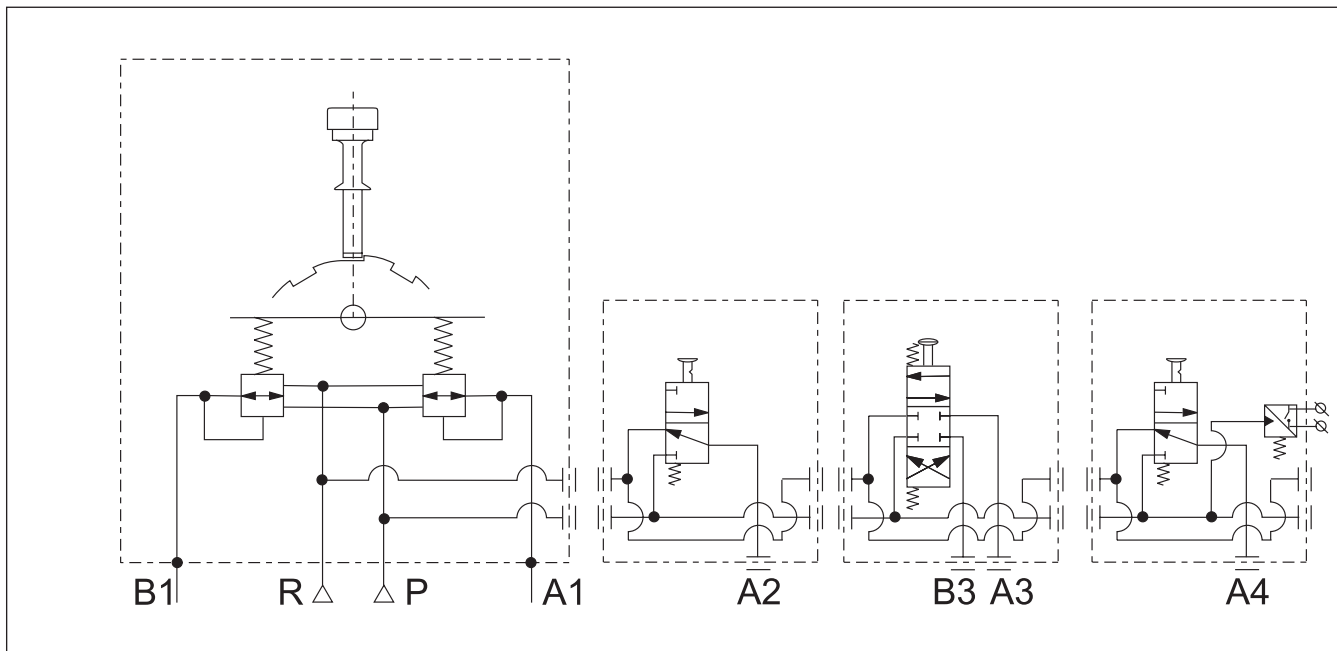
- Max. pressure = 10 bar
- Min. pressure = 5 bar
- Max. temperature = + 80°
- Min temperature = - 30°
- The pneumatic connections are suitable for 6 mm air hoses.

# AIR CONTROL

PROPORTIONAL AIR CONTROL MULTI SECTION



Hyva type : proportional air control MS  
 page # 2 / 2 part number 147 50 430 H  
 with optional additional sections

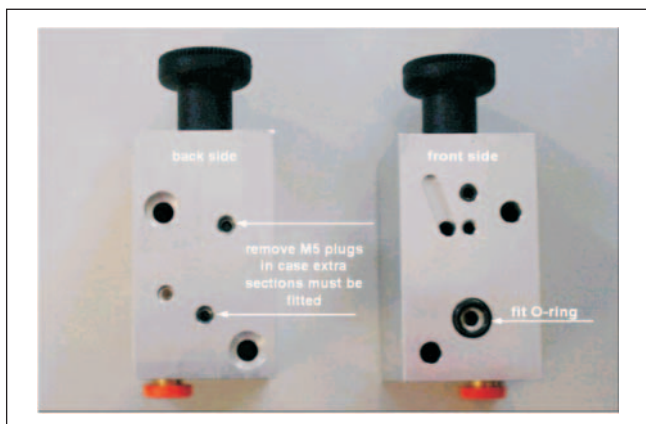


## Assembly instruction

- Remove internal hexagonal screws M5 (see picture below) from all sections except the last one in the row to open the P- and R-line (use 2,5 mm hexagon key).
- In case of more than 1 extra section fit, the treaded ends into the main section and tighten them with an adjustable pipe wrench.
- Fit the O-ring (to seal the P-connection between the sections) in the extra sections.
- Fit all the sections and tighten bolts/nuts (remind section 147 50 450 H can only be fitted at the end).
- Shorten remaining length of threaded ends.

## spare parts

Code	description	qty.
147 50 505 H	rubber for handle	1
019 68 626 H	lever for air control	1



Mounting surface for extra section