

AIR CONTROL



ELECTRIC / PNEUMATIC AIR CONTROL FOR VALVE

Hyva

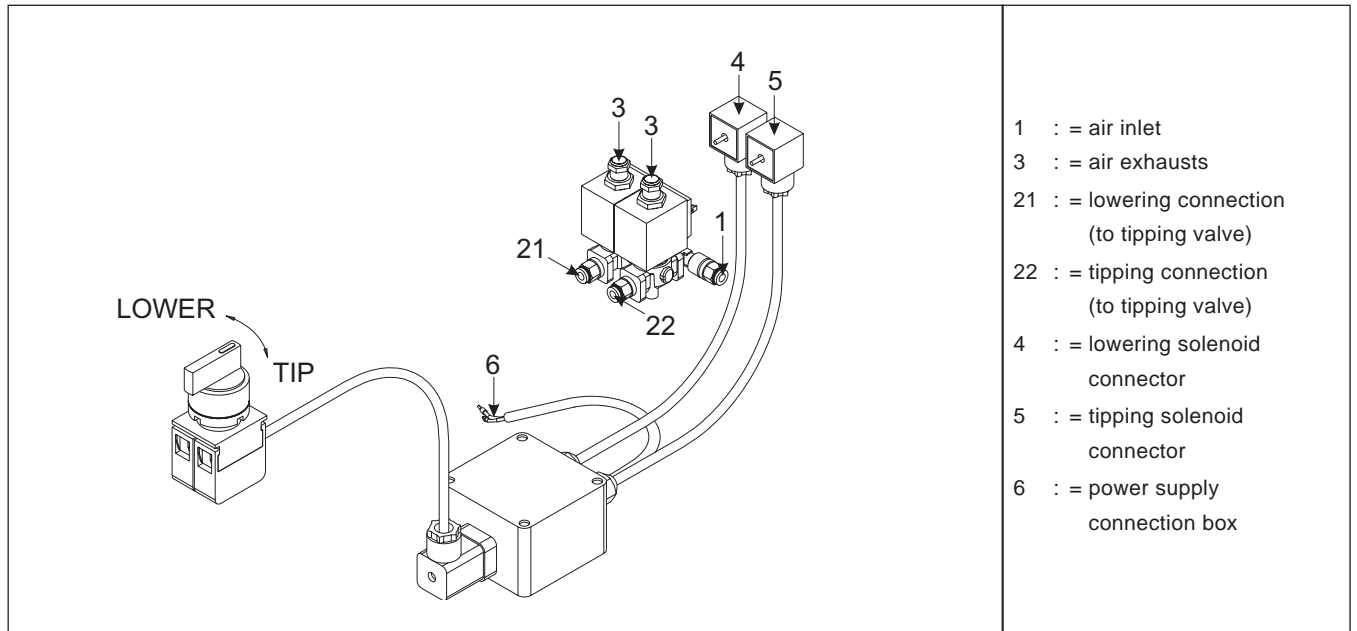
type :

electric / pneumatic air control for valve

page # 1 / 1

part number

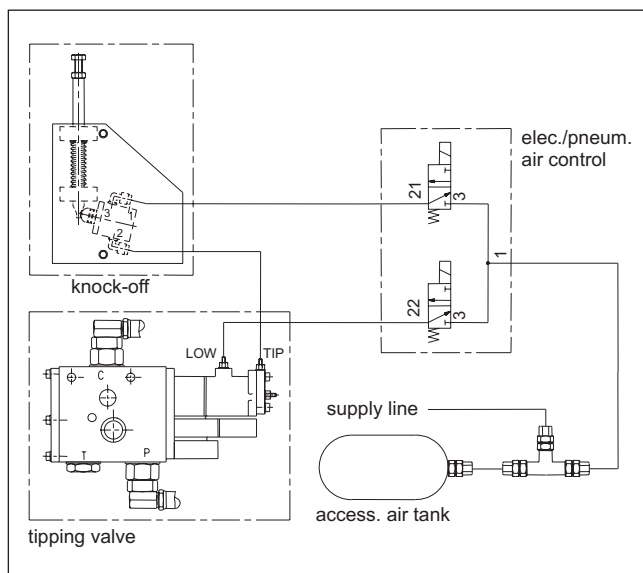
147 52 200



specifications

- The electrical switch, which operates the elc/pn valve, is at the tip position spring return and at the lower position fixed.
- The electric/pneumatic air control is build up with two electric/pneumatic 3/2 valves.
- The electric/pneumatic valves work at 24 VDC / 1 A.
- The pneumatic connections are suitable for 6 mm air hoses.
- The electric/pneumatic air control can be fitted easily because of the push-in adapters.
- The pneumatic valves are not proportional.
- The electric/pneumatic air control will be operated with rotating switch which can be mounted in the dashboard of the truck.

pneumatic scheme connecting air control



order possibilities of the air control

part no.	description	qty
147.52.221	electric/pneumatic valves (complete)	1
147.54.135	electric tipping switch	1
147.52.226	connecting box	1
148.10.517	push-in connector	3

mounting of the air control

1. Mount the connecting box in the chassis.
2. Mount the electric/pneumatic valves in the chassis.
3. Mount the tipping switch in the cab (in the dashboard or besides the chair for instance).
4. Connect the electric/pneumatic air control according the pneumatic scheme.
5. Connect the two connectors from the connecting box with the electric/pneumatic valves.
6. Connect the tipping switch, with a fuse of 5 A, to the power supply of the truck (check the body builders guide lines).
7. Connect the tipping switch with the connecting box.
8. Use always rubber grommets to protect the electric wires and to prevent dust and water enters the cabin.
9. For trouble free life of the entire pneumatic system their should be worked with "dry" air
10. The tipping switch should be mounted in such a way that:
 - It is easy to reach by the operator.
 - It is no obstacle when entering or leaving the cabin.
 - It is clear from any moving parts.
11. Ensure that air tubes or electric wires are:
 - Not too close to sharp objects
 - Clear from moving parts
 - Clear from exhaust and compressor lines
 - Not get kinked and not to long

note: The air supply must always be taken from an accessory air tank or auxiliary valve and the pneumatic system must be protected with a charging valve.
(see guide - lines from truck manufacturer)

For operation of the air control see the Hyva 'operation and maintenance instructions'