

# DUAL AIR CONTROL



EXTRA AIR CONTROL FOR VALVE

Hyva

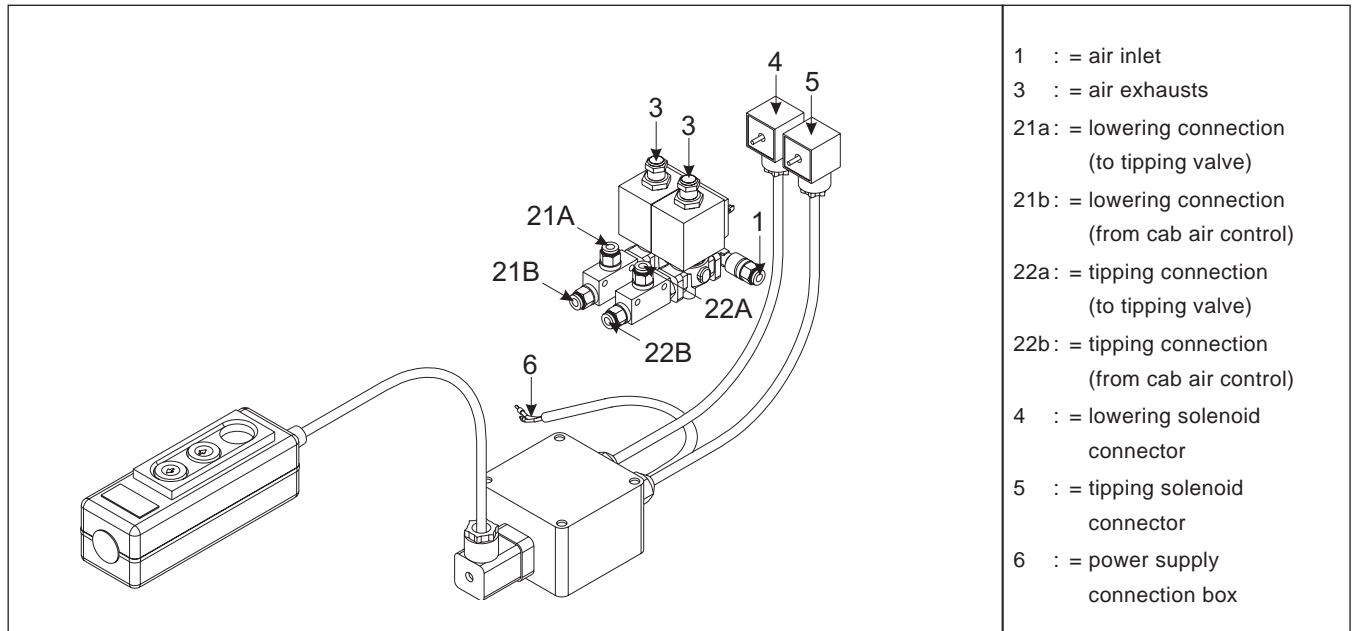
type :

dual air control for valve

page # 1 / 1

part number

147 52 201

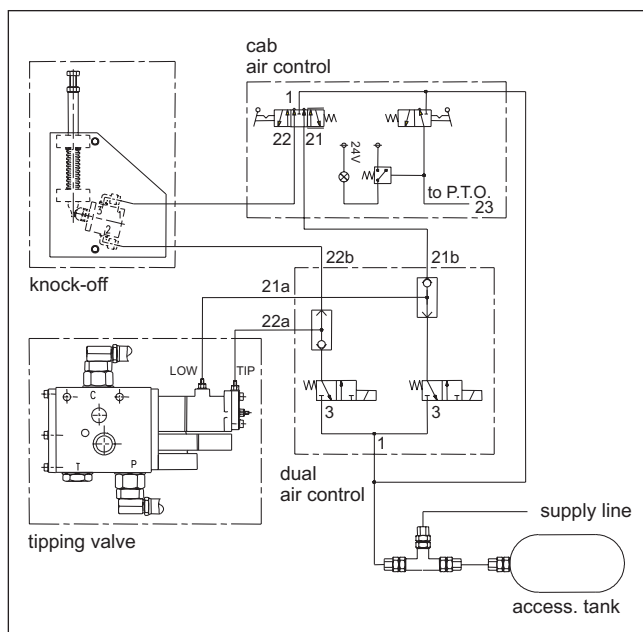


- 1 : = air inlet
- 3 : = air exhausts
- 21a : = lowering connection (to tipping valve)
- 21b : = lowering connection (from cab air control)
- 22a : = tipping connection (to tipping valve)
- 22b : = tipping connection (from cab air control)
- 4 : = lowering solenoid connector
- 5 : = tipping solenoid connector
- 6 : = power supply connection box

## specifications

- The extra air control is build up with two 3/2 electric/pneumatic valves and two shuttle valves.
- The electric pneumatic valves work at 24 VDC / 1 A.
- The pneumatic connections are suitable for 6 mm air hoses.
- The extra air control can be fitted easily in between the pneumatic hoses from the "normal" cab air control.
- The pneumatic valves are not proportional.
- The extra air control will be operated with a remote control.

## pneumatic scheme connecting air control



## order possibilities of the air control

part no.	description	qty
147.52.220	electric/pneumatic valves (complete)	1
147.52.222	shuttle valve (set)	1
147.52.225	remote control	1
147.52.226	connecting box	1
148.10.517	push-in connector	5

## mounting of the air control

1. Mount the connecting box in the chassis.
2. Mount the electric/pneumatic valves in the chassis.
3. Connect the dual air control according the pneumatic scheme.
4. Connect the two connectors from the connecting box with the electric/pneumatic valves.
5. Connect the connecting box, with a fuse of 5 Ampere, to the power supply of the truck (check the body builders guide lines).
6. For trouble free life of the entire pneumatic system their should be worked with "dry" air
7. Ensure that air tubes or electric wires are:
  - Not too close to sharp objects
  - Clear from moving parts
  - Clear from exhaust and compressor lines
  - Not get kinked
  - Not too long

**note:** The air supply must always be taken from an accessory air tank or auxiliary valve and the pneumatic system must be protected with a charging valve.  
( see guide - lines from truck manufacturer )

For operation of the air control see the Hyva 'operation and maintenance instructions'