

HYVA HYDRAULIC KIT



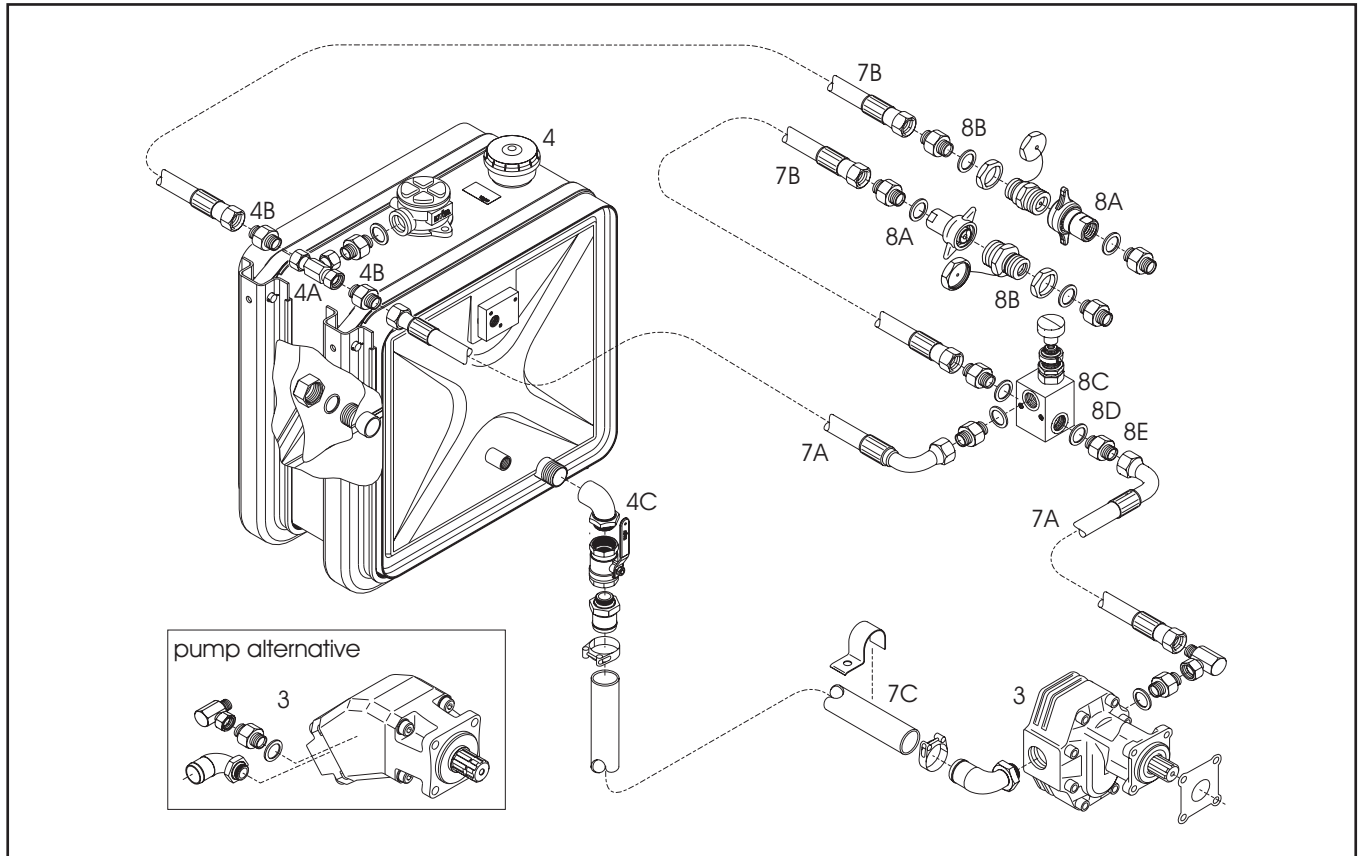
HYVA HYDRAULIC TRACTOR KIT

Hyva

kit :

Hydraulic tractor kit for Hyva Floor

Page 1 / 1



Part list

pos.	code no.	description	qty.
3		pump alternatives	
		gear pump "heavy duty" 87 or 109 L	1
		piston pump 80 or 100 L	1
4	DS 300 C	oil tank 167L/138L - SM - RF	1
4A	013 18 251	T-piece 1" BSPIT	1
4B	147 99 091	straight adapter 1" BSPOT	2
4C	149 61 179	elbow 1½" BSPIT - 1½" BSPOT	1

Part list

pos.	code no.	description	qty.
7A	147 90 443	hose H.P. 1" L=1500 1x90°	2
7B	147 90 373	hose H.P. 1" L=4000	2
7C	GM 100 AB	hose L.P. 1¼" L=2500	1
8A	HB 220 C	Q.D. coupling kit female 1"	2
8B	HB 220 C	Q.D. coupling kit male 1"	2
8C	013 19 875	pressure relief valve	1
8D	012 06 850	bonded seal ¾"	3
8E	147 99 080	straight adapter ¾" BSPOT- 1" BSPOT	3

Notes:

The advised pump is based on a 1:1 P.T.O. ratio.
Adjust the pump capacity to P.T.O. ratio and Rpm.
Max. pump flow for the Hyva Floor is 110L per minute.