

HYVA CYLINDER

FRONT-END CYLINDER WITH OUTER COVER

Hyva

page # 1 / 2

type:

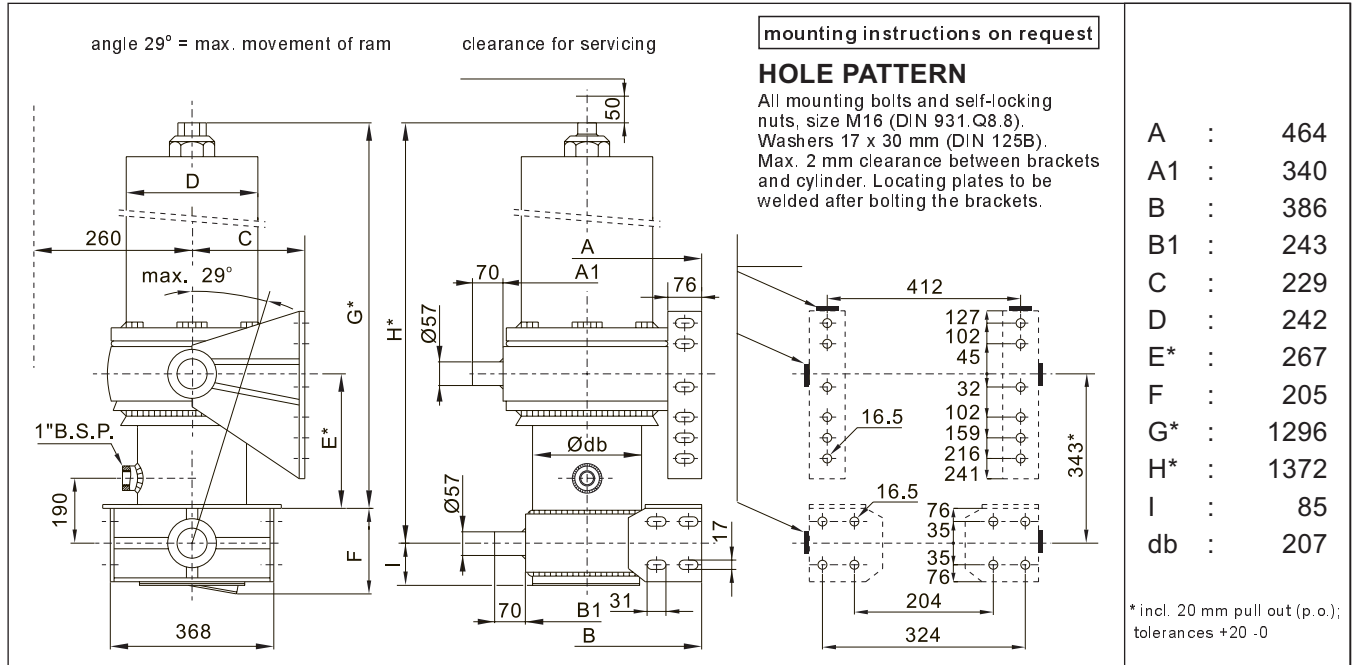
part number cylinder only:

tipping weight¹⁾:

FC 183 - 5 - 05190 - 009

015 43 715

46 tons



specification

type number	: FC 183 - 5 - 05390 - 009
number of extensions	: 5
total stroke	: 5390 mm
weight incl. brackets	: 367 kg
weight cylinder only	: 317 kg
total volume	: 96 L
working volume	: 86 L
operating pressure	: 170 bar (max.)
oil	: see oil specification sheet

brackets

(not included)

chassis bracket	: 015 06 043
lifting bracket left hand	: 015 06 705
lifting bracket right hand	: 015 06 717

¹⁾tipping weight = net weight body + payload.

This Hyva cylinder is designed as a lifting device only. It must not be used as a structural member or be subject to side loads and/or abnormal conditions. Pump flow in consultation with Hyva engineering department

stage	1	2	3	4	5	total
effective diameter (mm)	183	162	141	120	99	
stroke (mm)	1044	1064	1094	1094	894	5190
oil displacement (L)	28	22	17	12	7	86

calculation of the tipping weight

The calculation as shown is based on the following data:

working pressure : 170 bar (max.)

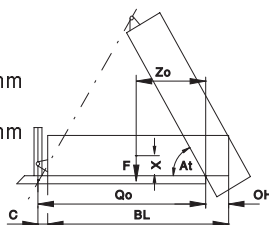
body length (BL) : 6750 mm

vertical distance between centre of gravity body and payload and rear hinge of body (X) : 650 mm

rear overhang (OH) : 600 mm

$Z_o = BL / 2 - OH$
 $Q_o = BL + C - OH$ (pivot)

$At = \frac{\text{stroke} \times 60}{Q_o}$



This table shows the relationship between body length, rear overhang and tipping weight¹⁾ (tons) and also gives the final angle of tip. Calculation based on working pressure of 170 bar.

rear overhang	body length (BL)							
	OH (mm)	6000	6250	6500	6750	7000	7250	7500
150	54° 44	51° 42	49° 40	47° 39	46° 38			
300	55° 47	53° 44	50° 42	48° 41	47° 39			
450		54° 48	52° 45	50° 43	48° 41	46° 40		
600			53° 48	51° 46	49° 44	47° 42	45° 41	
750			55° 52	52° 49	50° 46	48° 44	46° 43	
900				54° 53	51° 50	49° 47	47° 45	

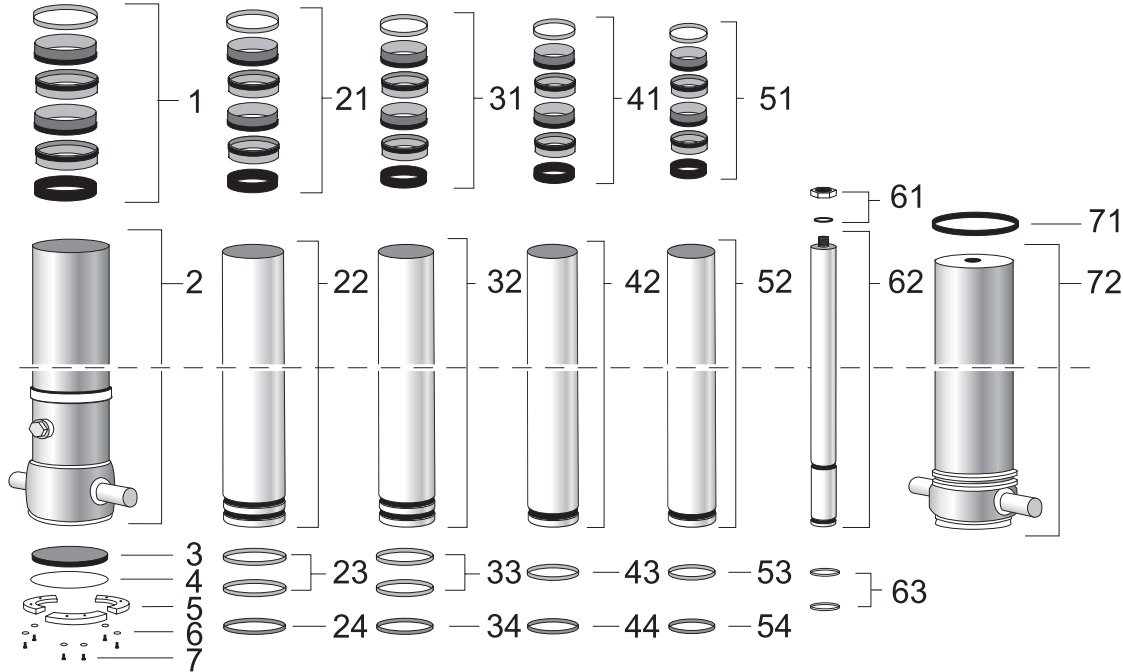
subject to change without notice

DO-E 01543715 / 03 10 21 / RV AA

HYVA CYLINDER

FRONT-END CYLINDER WITH OUTER COVER

Hyva type: FC 183 - 5 - 05190 - 009
 page # 2 / 2 part number cylinder only: 015 43 715
 tipping weight¹⁾: 46 tons



spare part list for cylinder 015 43 715

pos.	code no.	description	qty.
1	017 60 026 K	packset Ø207	1
2	017 03 663	B 207 - 1330 - 4/4 - 190	1
3	017 30 022	bottom plate Ø207	1
4	017 33 023 K	O-ring base Ø207	1
5	017 31 026	locking plate Ø207	3
6	017 32 547	washer for bolt	6
7	017 32 043	bolt	6
21	017 60 038 K	packset Ø187/183	1
22	026 15 484	S 183 - 1286 - SHP	1
23	017 50 045 K	slider Ø183	2
24	017 40 416 K	snap ring Ø183	1
31	017 60 040 K	packset Ø162	1
32	026 28 650	S 162 - 1286 - SHP	1
33	017 50 057 K	slider Ø162	2

pos.	code no.	description	qty.
34	017 40 428 K	snap ring Ø162	1
41	017 60 051 K	packset Ø141	1
42	017 14 648	S 141 - 1286	1
43	017 50 069 K	slider Ø141	1
44	017 40 430 K	snap ring Ø141	1
51	017 60 063 K	packset Ø120	1
52	017 15 148	S 120 - 1286	1
53	017 50 070 K	slider Ø120	1
54	017 40 441 K	snap ring Ø120	1
61	017 02 890 K	top nut and washer	1
62	027 37 056	P 099 - 1288 (-200)	1
63	017 50 082 K	slider Ø099	2
71	017 91 941	O-ring for outer cover Ø242	1
72	017 01 903	outer cover Ø242 L.1043	1

repair kit

code no.	description
017 62 114 K	complete cylinder packset consists of all packsets with packset grease and O-ring base

for specification see page # 1