

HYVA CYLINDER



715 04 262

Front end cylinder with outer cover

type

FC 129-4-04280-070A-K0343

tipping weight

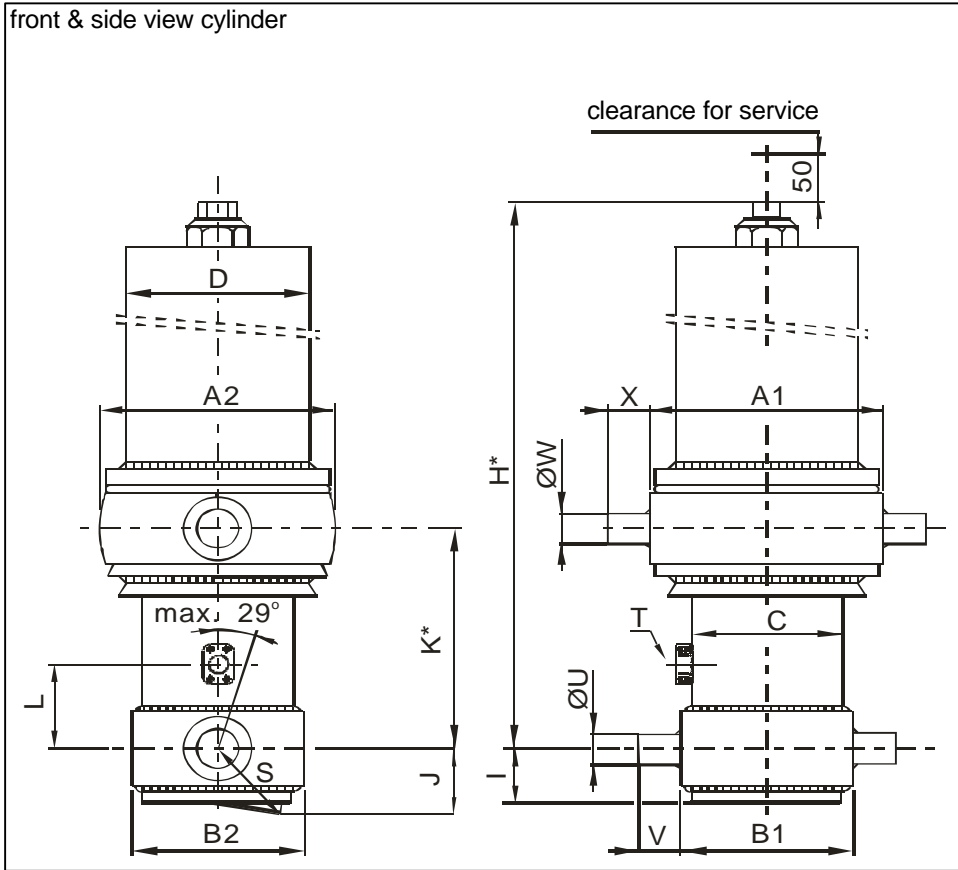
22-54 ton

page # 1 / 2

closed length (K)

338-373 mm

front & side view cylinder



	1	2	
A	340	300	mm
B	201	180	mm
C	149		mm
D	219		mm
E			mm
F			mm
G*			mm
H*	1399		mm
I	60		mm
J	91		mm
K*	343		mm
L	190		mm
M*			mm
N			mm
O			mm
P			mm
Q			mm
R			mm
S	106		mm
T	1" SAE		
U	60		mm
V	65		mm
W	60		mm
X	65		mm
Y			mm
Z			mm

*incl.20[-5;30] pull out on piston

specifications

weight cylinder only	202 kg
total volume	40 L
working volume	36 L
maximum pressure	190 bar
maximum pump flow	86 L/min
maximum cylinder angle to front	10 °
maximum thrust first stage**	25 ton

**when cyl. mounted at a large angle, thrust first stage may become too high: see Hyva Tipper Program

technical notes

This cylinder is a lifting device only and may not be used as structural member or be subject to side load. Working pressure depends on application; never exceed maximum pressure. Cylinder painted with Akzo Air drying Enamel (RAL9005). Max duration of extension 2 hours (excluded HC). See mounting instruction CYL-0019. See oil specification sheet OIL-0002. See bracket specification sheet 015BRA01.

extension	1	2	3	4	5	6	7	8	9	
effective diameter [mm]	129	110	91	72						total
stroke [mm]	1055	1075	1075	1075						4280

tipping weight

tipping weight at maximum pressure of 190 bar and C is 178 mm

BL (body length); OH (rear overhang); Ycog (vert. pos. centre of gravity); Qo (pivot length); C (bracket length);	BL	5700			5500			5300		
	OH	200	500	800	200	500	800	200	500	800
At = stroke x 60 / Qo	At	45	47	50	46	49	52	48	51	55
Ycog	600	22	25	29	23	26	31	24	28	33
900	25	28	34	26	30	37	27	32	41	
1200	27	32	41	29	35	46	30	38	54	

Subject to change without notice.

DO-E 71504262 / 05-05-18 / RV AA

HYVA CYLINDER

715 04 262

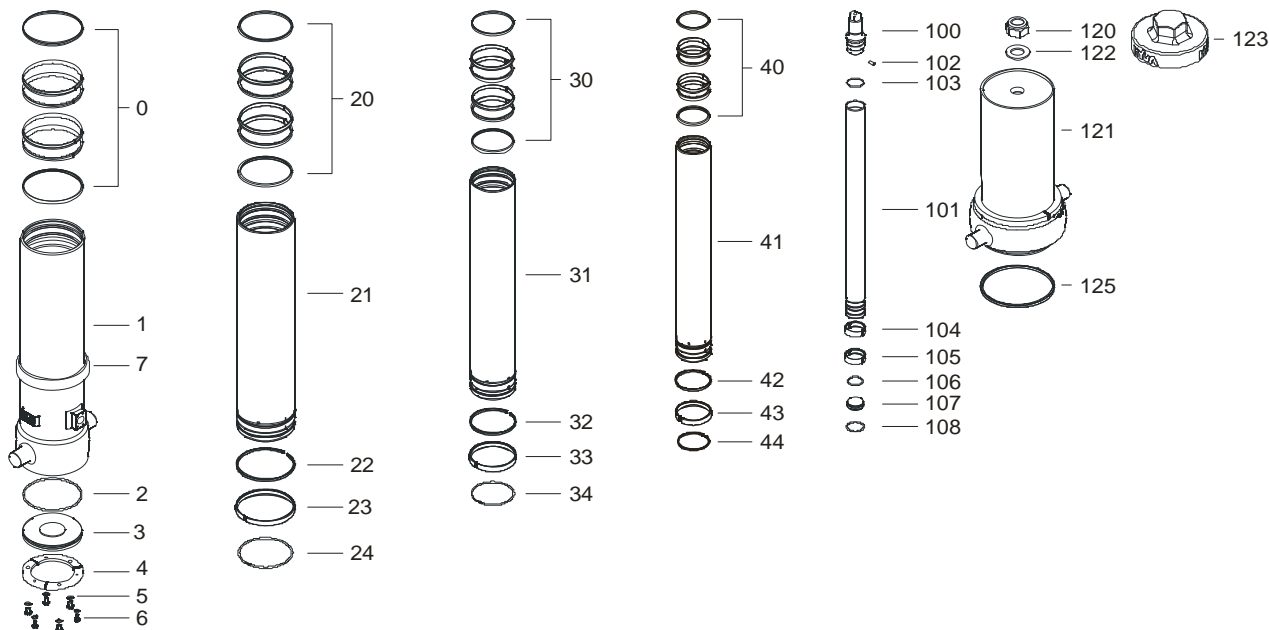


Front end cylinder with outer cover

type

FC 129-4-04280-070A-K0343

page # 2 / 2



Spare part list

Pos	Part no.	Description	Qty.
0	71802149 K	PACKSET 149	01
1	72505302 *	BASE 149-1314-4/4SAE-190-90	01
2	71870030	O-RING BOTTOM PLATE 149	01
3	71821149	BOTTOM PLATE 149	01
4	71820149 K	LOCKING PLATE 149	03
5	01732559 K	SPRING WASHER M8	06
6	01732055 K	BOLT M8 X 1.25 X 20	06
7	71840520 *	ANTI RATTLE RING 149 FOR COVER 219	01

20	71802129 K	PACKSET 129	01
21	72604300	STAGE 129-1275	01
22	K	NOT APPLICABLE	00
23	71807129 K	SLIDER 129 (2 X 1/2)	02
24	71812129 K	LIFTRING 129	01

30	71802110 K	PACKSET 110	01
31	72603300	STAGE 110-1275	01
32	K	NOT APPLICABLE	00
33	71807110 K	SLIDER 110 (2 X 1/2)	02
34	71812110 K	LIFTRING 110	01

Spare part list

Pos	Part no.	Description	Qty.
40	71802091 K	PACKSET 091	01
41	72602300	STAGE 091-1275	01
42	K	NOT APPLICABLE	00
43	71807091 K	SLIDER 091 (2 X 1/2)	02
44	71812091 K	LIFTRING 091	01

100	71531072	PISTON HEAD 072 MACHINED	01
101	72401301	PISTON S 072-1280-HC	01
102	71875010 K	PIN ROUND HEAD GROOVED	01
103	71870110	O-RING PISTON TOP 072	01
104	71807072 K	SLIDER 072 (2 X 1/2)	01
105	71807072 K	SLIDER 072 (2 X 1/2)	01
106	71870210 K	O-RING PISTON BOTTOM 072	01
107	71822072	BOTTOM PLATE PISTON 072	01
108	71814072 K	SNAPRING FOR PISTON 072	01

120	01702907	TOPNUT M48x3	01
121	71705350	COVER 219-1075	01
122	01702956	WASHER M48	01
123	K	NOT APPLICABLE	00
125	01791941	O-RING COVER D219	01

Seal kit complete:

Part no.	Description
71901440 K	Seal kit complete: consists of all packsets with packset grease and O-rings

NOTE :

* Specify part number of cylinder when ordering a spare base with a spare anti rattle ring.