

# HYVA CYLINDER



715 04 263

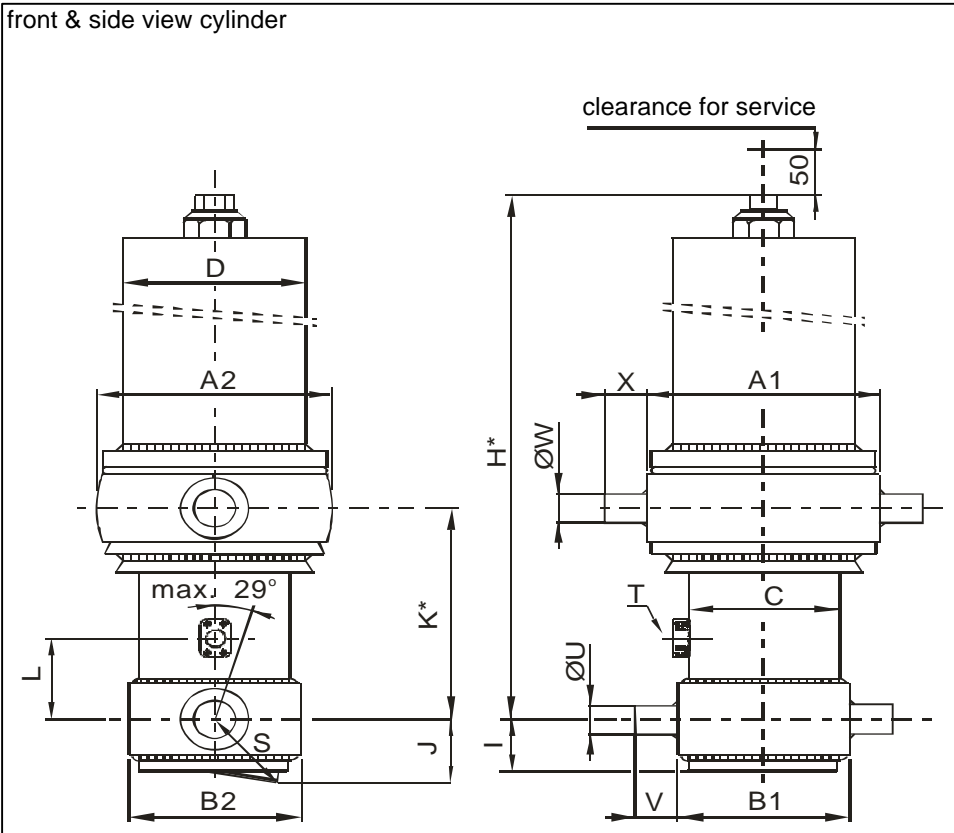
Front end cylinder with outer cover

type  
tipping weight  
closed length (K)

FC 129-4-04280-070A-K0343-HC  
22-54 ton  
338-373 mm

page # 1 / 2

front & side view cylinder



	1	2	
A	340	300	mm
B	201	180	mm
C	149		mm
D	219		mm
E			mm
F			mm
G*			mm
H*	1399		mm
I	60		mm
J	91		mm
K*	343		mm
L	190		mm
M*			mm
N			mm
O			mm
P			mm
Q			mm
R			mm
S	106		mm
T	1" SAE		
U	60		mm
V	65		mm
W	60		mm
X	65		mm
Y			mm
Z			mm

\*incl.20[-5;30] pull out on piston

## specifications

weight cylinder only	202 kg
total volume	40 L
working volume	36 L
maximum pressure	190 bar
maximum pump flow	86 L/min
maximum cylinder angle to front	10 °
maximum thrust first stage**	25 ton

\*\*when cyl. mounted at a large angle, thrust first stage may become too high: see Hyva Tipper Program

## technical notes

This cylinder is a lifting device only and may not be used as structural member or be subject to side load. Working pressure depends on application; never exceed maximum pressure. Cylinder painted with Akzo Air drying Enamel (RAL9005). Max duration of extension 2 hours (excluded HC). See mounting instruction CYL-0019. See oil specification sheet OIL-0002. See bracket specification sheet 015BRA01.

extension	1	2	3	4	5	6	7	8	9	
effective diameter [mm]	129	110	91	72						total
stroke [mm]	1055	1075	1075	1075						4280

## tipping weight

tipping weight at maximum pressure of 190 bar and C is 178 mm

	5700			5500			5300		
	BL	OH	At	BL	OH	At	BL	OH	At
BL (body length); OH (rear overhang); X=Ycog (vert. pos. centre of gravity); Qo (pivot length); C (bracket length);									
$O_H A_t = \text{stroke} \times 60 / Q_o$									
Ycog									
600	22	25	29	23	26	31	24	28	33
900	25	28	34	26	30	37	27	32	41
1200	27	32	41	29	35	46	30	38	54

Subject to change without notice.

DO-E 71504263 / 06-04-26 / RV AB

# HYVA CYLINDER



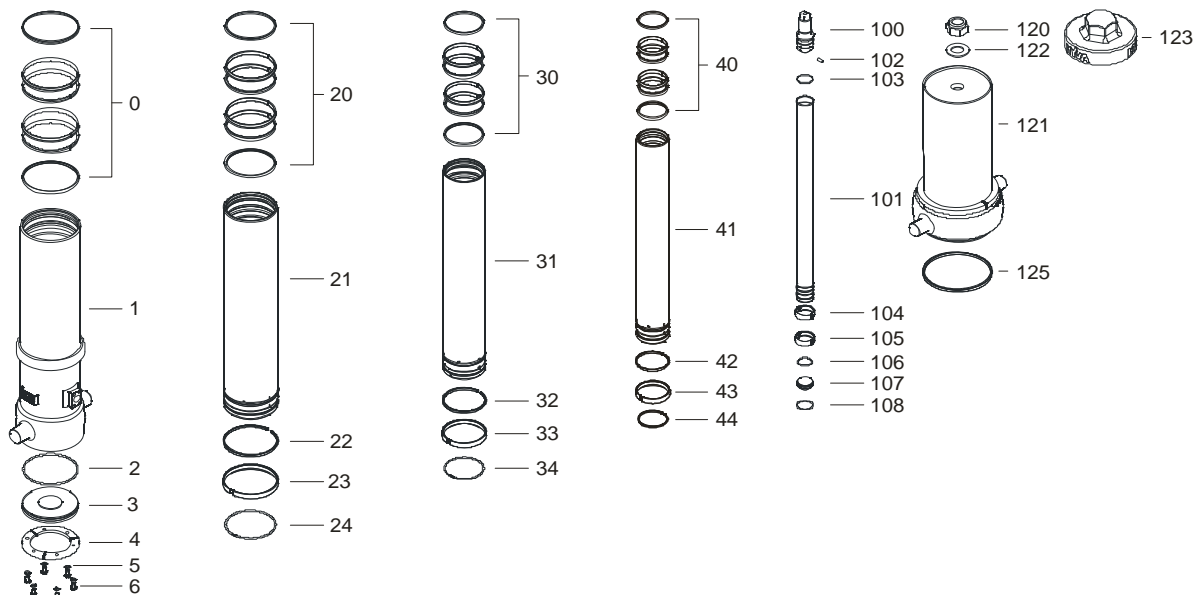
715 04 263

Front end cylinder with outer cover

type

FC 129-4-04280-070A-K0343-HC

page # 2 / 2



## Spare part list

Pos	Part no.	Description	Qty.
0	71802149 K	PACKSET 149	01
1	72505302R0975	BASE 149-1314-4/4SAE-190-90-C219	01
2	71870030 K	SEAL BOTTOM PLATE 149	01
3	71821149	BOTTOM PLATE 149	01
4	71820149	LOCKING PLATE 149	03
5	01732559 K	SPRING WASHER M8 SET	01
6	01732055 K	BOLT M8 X 1.25 X 20 SET	01
20	71802129 K	PACKSET 129	01
21	72604301	STAGE 129-1275-HC	01
22		NOT APPLICABLE	00
23	71807129 K	SLIDER 129 (2 X 1/2)	02
24	71812129 K	LIFTRING 129	01
30	71802110 K	PACKSET 110	01
31	72603301	STAGE 110-1275-HC	01
32		NOT APPLICABLE	00
33	71807110 K	SLIDER 110 (2 X 1/2)	02
34	71812110 K	LIFTRING 110	01

## Spare part list

Pos	Part no.	Description	Qty.
40	71802091 K	PACKSET 091	01
41	72602301	STAGE 091-1275-HC	01
42		NOT APPLICABLE	00
43	71807091 K	SLIDER 091 (2 X 1/2)	02
44	71812091 K	LIFTRING 091	01
100	71831072	PISTON HEAD 072 MACHINED	01
101	72401301	PISTON S 072-1280-HC	01
102	71875010	PIN ROUND HEAD GROOVED 6x15 mm	01
103	71870110 K	O-RING PISTON TOP 072	01
104	71807072 K	SLIDER 072 (2 X 1/2)	01
105	71807072 K	SLIDER 072 (2 X 1/2)	01
106	71870210	O-RING PISTON BOTTOM 072	01
107	71822072	BOTTOM PLATE PISTON 072	01
108	71814072	SNAPRING FOR PISTON 072	01
120	01702907	TOPNUT M48x3	01
121	71705350	COVER 219-1075	01
122	01702956	WASHER M48	01
123	01702973	DUST COVER FOR COVER 219 YELLOW C	01
125	01791930	O-RING COVER D219	01

## Seal kit complete:

Part no.	Description
71901440 K	Seal kit complete: consists of all packsets with packset grease, O-rings and Pin (pos.102)