

# HYVA CYLINDER



715 04 393

Front end cylinder with outer cover

type

FC 129-4-05180-070A-K0343-HC

tipping weight

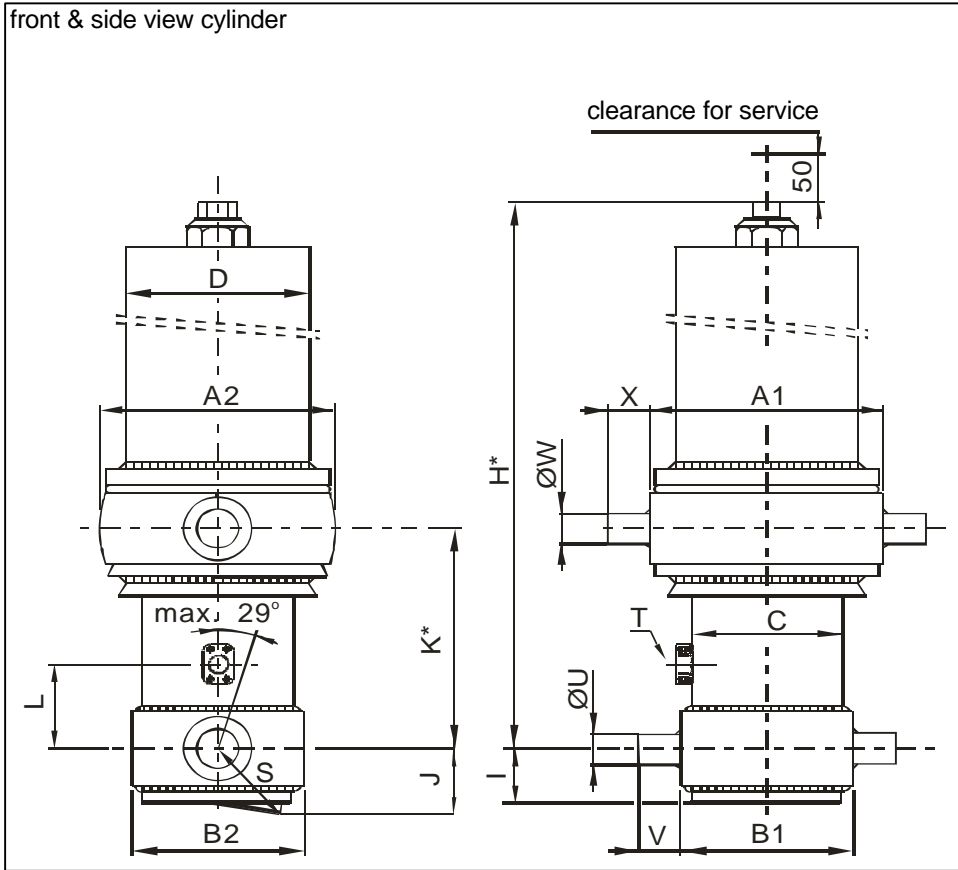
22-41 ton

page # 1 / 2

closed length (K)

338-373 mm

front & side view cylinder



	1	2	
A	340	300	mm
B	201	180	mm
C	149		mm
D	219		mm
E			mm
F			mm
G*			mm
H*	1644		mm
I	60		mm
J	91		mm
K*	343		mm
L	190		mm
M*			mm
N			mm
O			mm
P			mm
Q			mm
R			mm
S	106		mm
T	1" SAE		
U	60		mm
V	65		mm
W	60		mm
X	65		mm
Y			mm
Z			mm

\*incl.20[-5;30] pull out on piston

## specifications

weight cylinder only	231 kg
total volume	48 L
working volume	43 L
maximum pressure	190 bar
maximum pump flow	86 L/min
maximum cylinder angle to front	10 °
maximum thrust first stage**	25 ton

\*\*when cyl. mounted at a large angle, thrust first stage may become too high: see Hyva Tipper Program

## technical notes

This cylinder is a lifting device only and may not be used as structural member or be subject to side load. Working pressure depends on application; never exceed maximum pressure. Cylinder painted with Akzo Air drying Enamel (RAL9005). Max duration of extension 2 hours (excluded HC). See mounting instruction CYL-0019. See oil specification sheet OIL-0002. See bracket specification sheet 015BRA01.

extension	1	2	3	4	5	6	7	8	9	
effective diameter [mm]	129	110	91	72						total
stroke [mm]	1280	1300	1300	1300						5180

## tipping weight

tipping weight at maximum pressure of 190 bar and C is 178 mm

BL (body length); OH (rear overhang); Ycog (vert. pos. centre of gravity); Qo (pivot length); C (bracket length); At = stroke x 60 / Qo	6900			6600			6300		
	BL	OH	At	BL	OH	At	BL	OH	At
Ycog									
600	22	23	26	22	24	28	23	26	30
900	23	26	29	24	27	31	25	29	34
1200	25	28	33	26	30	36	28	33	41

Subject to change without notice.

DO-E 71504393 / 05-05-18 / RV AA

# HYVA CYLINDER

715 04 393

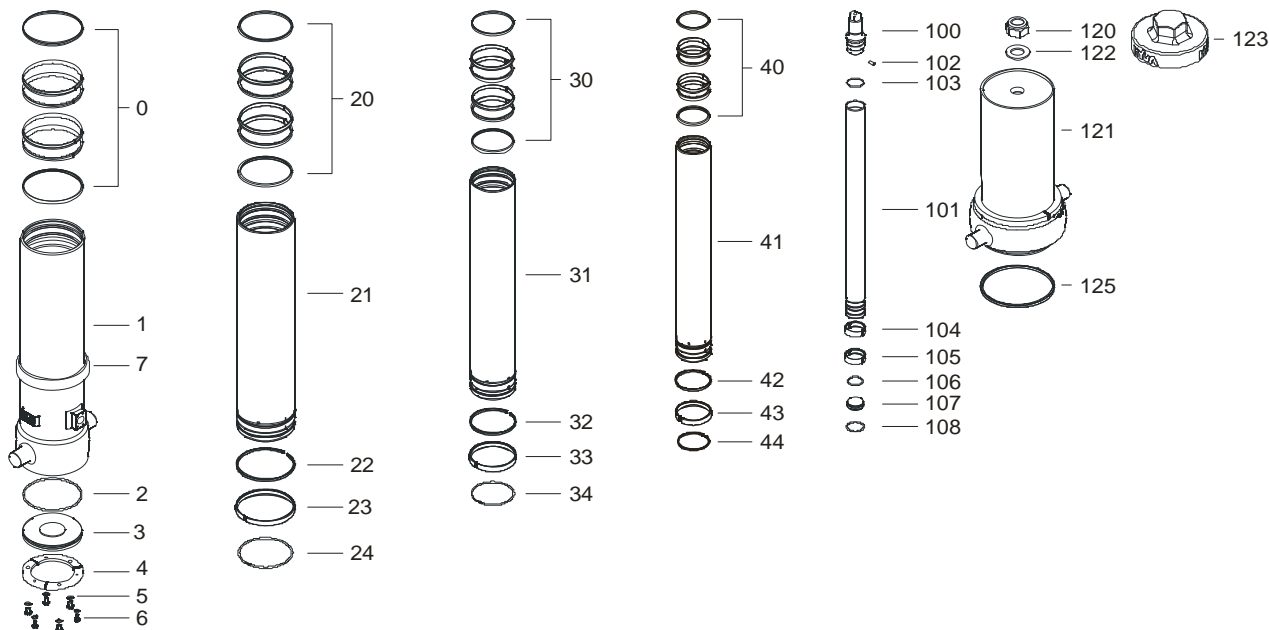


Front end cylinder with outer cover

type

FC 129-4-05180-070A-K0343-HC

page # 2 / 2



## Spare part list

Pos	Part no.	Description	Qty.
0	71802149 K	PACKSET 149	01
1	72505511 *	BASE 149-1559-4/4SAE-190-90	01
2	71870030	O-RING BOTTOM PLATE 149	01
3	71821149	BOTTOM PLATE 149	01
4	71820149 K	LOCKING PLATE 149	03
5	01732559 K	SPRING WASHER M8	06
6	01732055 K	BOLT M8 X 1.25 X 20	06
7	71840520 *	ANTI RATTLE RING 149 FOR COVER 219	01
20	71802129 K	PACKSET 129	01
21	72604511	STAGE 129-1520-HC	01
22	K	NOT APPLICABLE	00
23	71807129 K	SLIDER 129 (2 X 1/2)	02
24	71812129 K	LIFTRING 129	01
30	71802110 K	PACKSET 110	01
31	72603511	STAGE 110-1520-HC	01
32	K	NOT APPLICABLE	00
33	71807110 K	SLIDER 110 (2 X 1/2)	02
34	71812110 K	LIFTRING 110	01

## Spare part list

Pos	Part no.	Description	Qty.
40	71802091 K	PACKSET 091	01
41	72602511	STAGE 091-1520-HC	01
42	K	NOT APPLICABLE	00
43	71807091 K	SLIDER 091 (2 X 1/2)	02
44	71812091 K	LIFTRING 091	01
100	71531072	PISTON HEAD 072 MACHINED	01
101	72401511	PISTON S 072-1525-HC	01
102	71875010 K	PIN ROUND HEAD GROOVED	01
103	71870110	O-RING PISTON TOP 072	01
104	71807072 K	SLIDER 072 (2 X 1/2)	01
105	71807072 K	SLIDER 072 (2 X 1/2)	01
106	71870210 K	O-RING PISTON BOTTOM 072	01
107	71822072	BOTTOM PLATE PISTON 072	01
108	71814072 K	SNAPRING FOR PISTON 072	01
120	01702907	TOPNUT M48x3	01
121	71705538	COVER 219-1325	01
122	01702956	WASHER M48	01
123	K	NOT APPLICABLE	00
125	01791941	O-RING COVER D219	01

## Seal kit complete:

Part no.	Description
71901440 K	Seal kit complete: consists of all packsets with packset grease and O-rings

NOTE :

\* Specify part number of cylinder when ordering a spare base with a spare anti rattle ring.