

HYVA CYLINDER



715 05 262

Front end cylinder with outer cover

type

FC 149-4-04280-070A-K0343

tipping weight

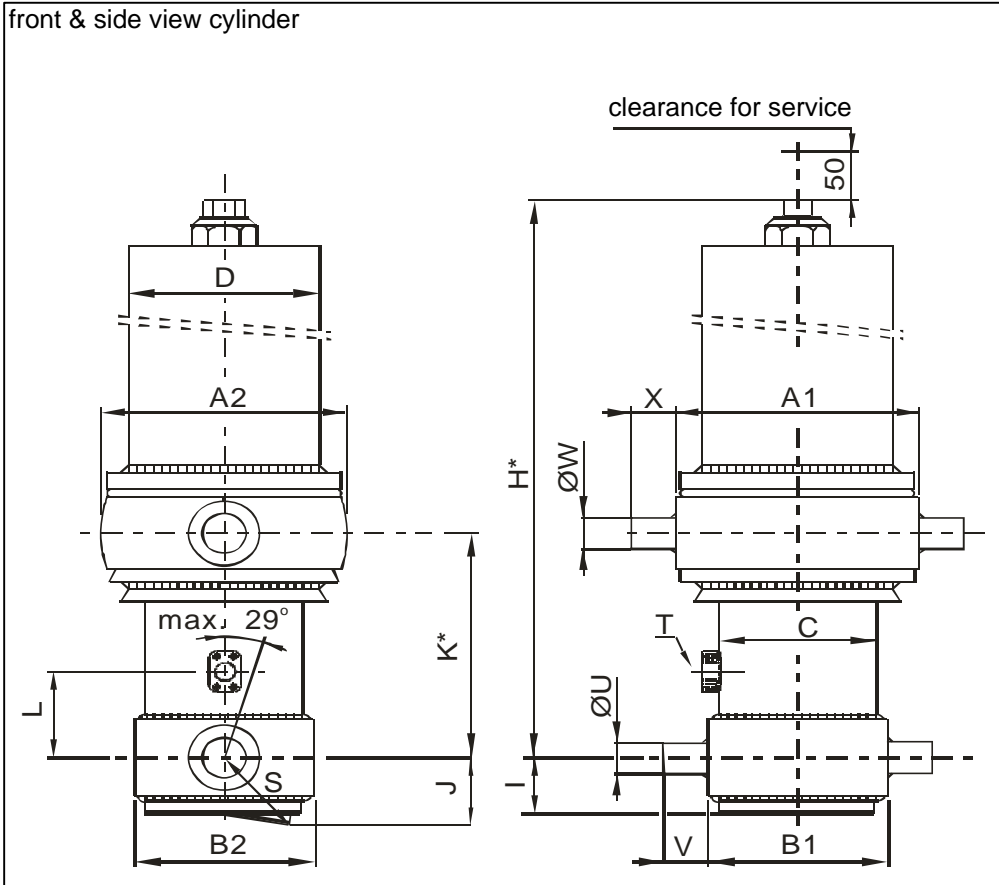
36-76 ton

page # 1 / 2

closed length (K)

338-373 mm

front & side view cylinder



	1	2	
A	340	329	mm
B	201	201	mm
C	169		mm
D	242		mm
E			mm
F			mm
G*			mm
H*	1399		mm
I	60		mm
J	96		mm
K*	343		mm
L	190		mm
M*			mm
N			mm
O			mm
P			mm
Q			mm
R			mm
S	114		mm
T	1" SAE		
U	60		mm
V	65		mm
W	60		mm
X	65		mm
Y			mm
Z			mm

*incl.20[-;30] pull out on piston

specifications

weight cylinder only	236 kg
total volume	55 L
working volume	50 L
maximum pressure	190 bar
maximum pump flow	137 L/min
maximum cylinder angle to front	10 °
maximum thrust first stage**	30 ton

**when cyl. mounted at a large angle, thrust first stage may become too high: see Hyva Tipper Program

technical notes

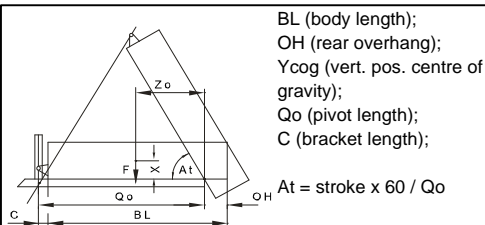
This cylinder is a lifting device only and may not be used as structural member or be subject to side load. Working pressure depends on application; never exceed maximum pressure. Cylinder painted with Akzo Air drying Enamel (RAL9005). Max duration of extension 2 hours (excluded HC). See mounting instruction CYL-0019. See oil specification sheet OIL-0002. See bracket specification sheet 015BRA01.

extension	1	2	3	4	5	6	7	8	9	
effective diameter [mm]	149	129	110	91						total
stroke [mm]	1055	1075	1075	1075						4280

tipping weight

tipping weight at maximum pressure of 190 bar and C is 229 mm

	BL	5700			5450			5200		
OH	200	500	800	200	500	800	200	500	800	
At	44	47	50	46	49	52	49	52	56	
Ycog										
600	36	41	47	37	43	51	39	45	56	
900	39	45	55	41	49	61	44	53	70	
1200	43	52	65	46	57	76	50	64		



HYVA CYLINDER



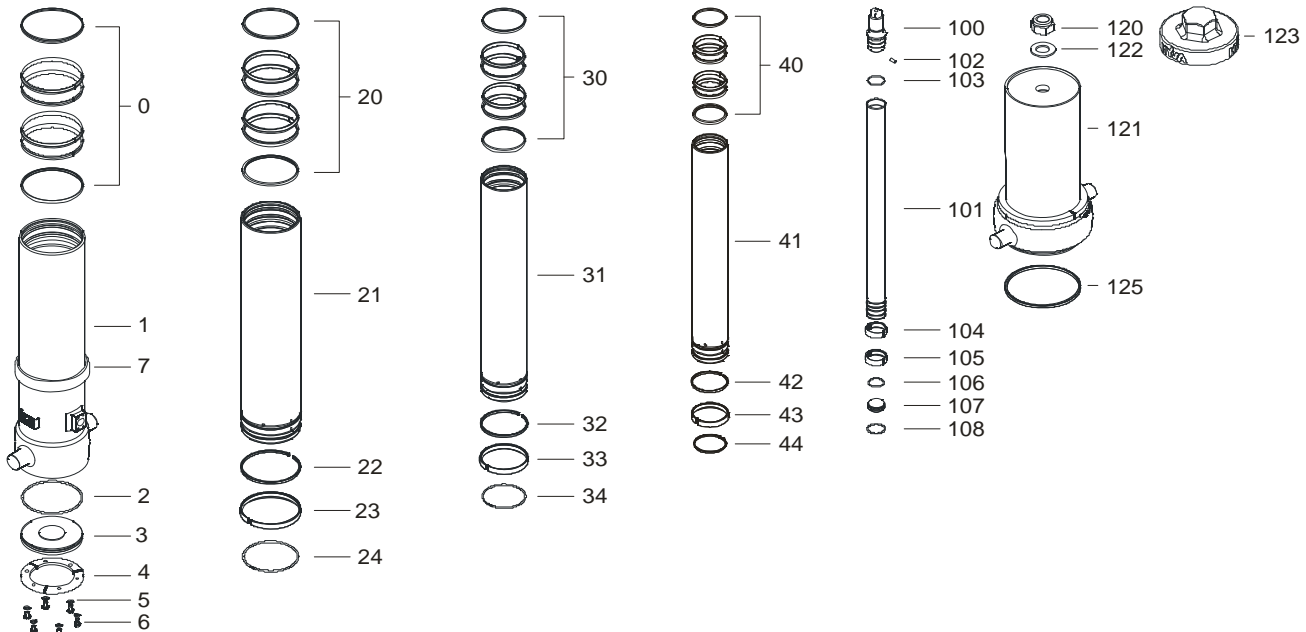
715 05 262

Front end cylinder with outer cover

type

FC 149-4-04280-070A-K0343

page # 2 / 2



Spare part list

Pos	Part no.	Description	Qty.
0	71802169 K	PACKSET 169	01
1	72506302 *	BASE 169-1314-4/4SAE-190-90	01
2	71870035	O-RING BOTTOM PLATE 169	01
3	71821169	BOTTOM PLATE 169	01
4	71820169 K	LOCKING PLATE 169	03
5	01732559 K	SPRING WASHER M8	06
6	01732055 K	BOLT M8 X 1.25 X 20	06
7	71840620 *	ANTI RATTLE RING 169 FOR COVER 242	01
20	71802149 K	PACKSET 149	01
21	72605300	STAGE 149-1275	01
22	71811149 K	OUTER STOPRING 149	01
23	71807149 K	SLIDER 149	01
24	71812149 K	LIFTRING 149	01
30	71802129 K	PACKSET 129	01
31	72604300	STAGE 129-1275	01
32		NOT APPLICABLE	00
33	71807129 K	SLIDER 129 (2 X 1/2)	02
34	71812129 K	LIFTRING 129	01

Spare part list

Pos	Part no.	Description	Qty.
40	71802110 K	PACKSET 110	01
41	72603300	STAGE 110-1275	01
42		NOT APPLICABLE	00
43	71807110 K	SLIDER 110 (2 X 1/2)	02
44	71812110 K	LIFTRING 110	01
100	71531091	PISTON HEAD 091 MACHINED	01
101	72402301	PISTON S 091-1280-HC	01
102	71875010 K	PIN ROUND HEAD GROOVED	01
103	71870115	O-RING PISTON TOP 091	01
104	71807091 K	SLIDER 091 (2 X 1/2)	01
105	71807091 K	SLIDER 091 (2 X 1/2)	01
106	71870215 K	O-RING PISTON BOTTOM 091	01
107	71822091	BOTTOM PLATE PISTON 091	01
108	71814091 K	SNAPRING FOR PISTON 091	01
120	01702907	TOPNUT M48x3	01
121	71706354	COVER 242-1075	01
122	01702956	WASHER M48	01
123	01702972	DUST COVER FOR COVER 242	01
125	01791941	O-RING COVER D242	01

Seal kit complete:

Part no.	Description
71901540 K	Seal kit complete: consists of all packsets with packset grease and O-rings

NOTE :

* Specify part number of cylinder when ordering a spare base with spare anti rattle ring.