

HYVA CYLINDER



715 66 461

Front end cylinder with double eye

type

FEE 169-5-05780-219A-K1619-HC

tipping weight

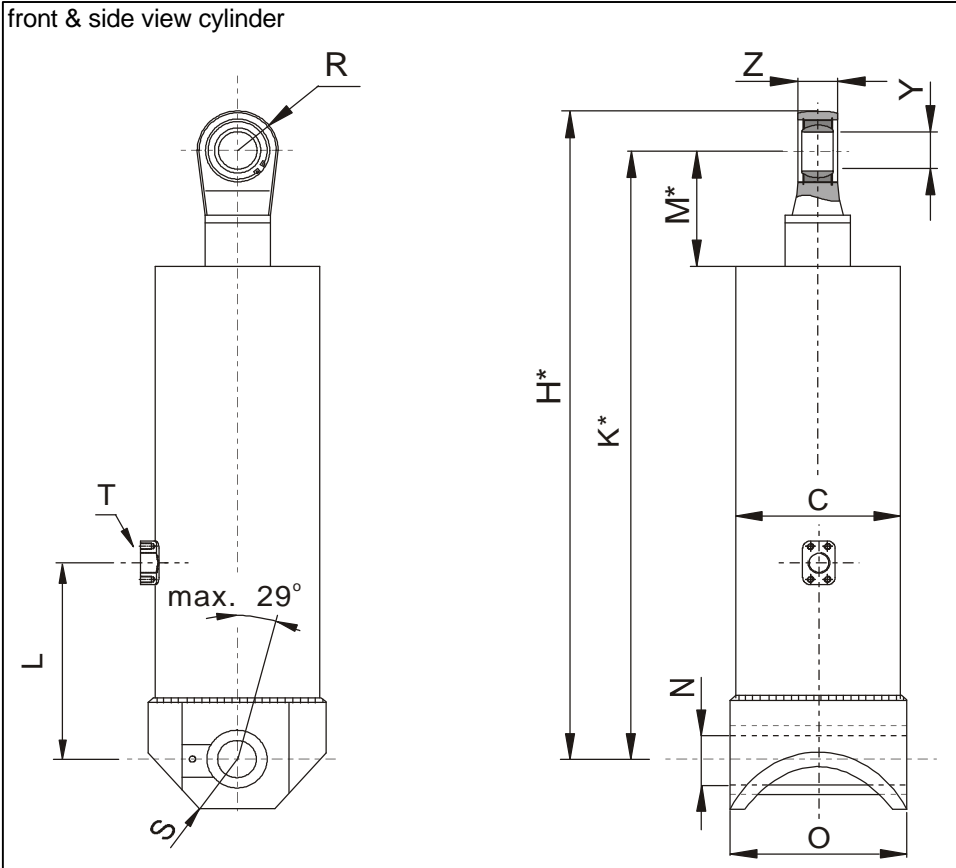
34-60 ton

page # 1 / 2

closed length (K)

1614-1649 mm

front & side view cylinder



	1	2	
A			mm
B			mm
C	191		mm
D			mm
E			mm
F			mm
G*			mm
H*	1672		mm
I			mm
J			mm
K*	1619		mm
L	385		mm
M*	180		mm
N	60,5		mm
O	240		mm
P			mm
Q			mm
R	53		mm
S	61		mm
T	1" SAE		
U			mm
V			mm
W			mm
X			mm
Y	50		mm
Z	42		mm

*incl.20[-5;30] pull out on piston

specifications

weight cylinder only	224 kg
total volume	87 L
working volume	80 L
maximum pressure	190 bar
maximum pump flow	137 L/min
maximum cylinder angle to front	30 °
maximum thrust first stage**	35 ton

**when cyl. mounted at a large angle, thrust first stage may become too high: see Hyva Tipper Program

technical notes

This cylinder is a lifting device only and may not be used as structural member or be subject to side load. Working pressure depends on application; never exceed maximum pressure. Cylinder painted with Akzo Air drying Enamel (RAL9005). Max duration of extension 2 hours (excluded HC). See mounting instruction CYL-0019. See oil specification sheet OIL-0002. See bracket specification sheet 015BRA01.

extension	1	2	3	4	5	6	7	8	9	
effective diameter [mm]	169	149	129	110	91					total
stroke [mm]	1140	1160	1160	1160	1160					5780

tipping weight

tipping weight at maximum pressure of 190 bar and C is 158 mm

	BL	7600			7350			7100		
OH	200	500	800	200	500	800	200	500	800	
At	46	48	50	48	50	52	49	52	55	
Ycog										
600	34	37	41	35	39	43	36	40	45	
900	37	41	46	38	42	48	40	45	52	
1200	40	45	51	42	47	55	44	50	60	

Subject to change without notice.

DO-E 71566461 / 05-06-16 / RV AA

HYVA CYLINDER



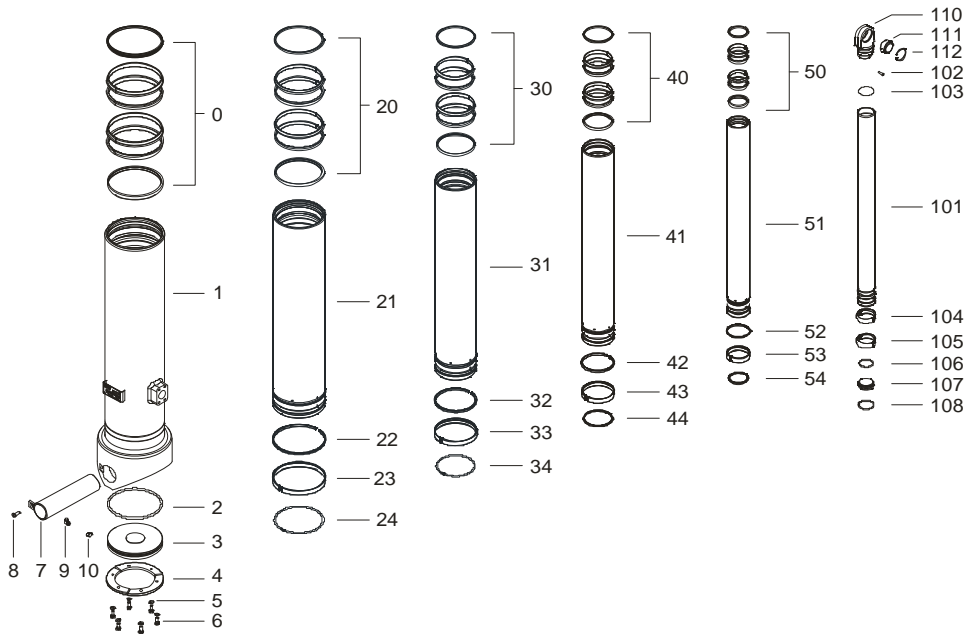
715 66 461

Front end cylinder with double eye

type

FEE 169-5-05780-219A-K1619-HC

page # 2 / 2



Spare part list

Pos	Part no.	Description	Qty.
0	71802191 K	PACKSET 191	01
1	72507385	BASE E 191-1399-4/4SAE-385	01
2	71870040 K	O-RING BOTTOM PLATE 191	01
3	71821191	BOTTOM PLATE 191	01
4	71820191	LOCKING PLATE 191	03
5	01732559	SPRING WASHER M8	06
6	01732055	BOLT M8 X 1.25 X 20	06
7	01794365	LONG BOSS EYE B.191 (73-60.5) L=240	01
8	01746121	BOLT LOCKING FEE BUSH M8	01
9	01317660	GREASE NIPPLE 90° 1/8" BSPOT	01
10	01317670	PROTECTION CAP FOR GREASER NIPPLE	01

20	71802169 K	PACKSET 169	01
21	72606371	STAGE 169-1360-HC	01
22	71811169 K	OUTER STOPRING 169	01
23	71807169 K	SLIDER 169	01
24	71813169 K	LIFTRING 169	01

30	71802149 K	PACKSET 149	01
31	72605371	STAGE 149-1360-HC	01
32	71811149 K	OUTER STOPRING 149	01
33	71807149 K	SLIDER 149	01
34	71812149 K	LIFTRING 149	01

Spare part list

Pos	Part no.	Description	Qty.
40	71802129 K	PACKSET 129	01
41	72604371	STAGE 129-1360-HC	01
42		NOT APPLICABLE	00
43	71807129 K	SLIDER 129 (2 X 1/2)	02
44	71812129 K	LIFTRING 129	01

50	71802110 K	PACKSET 110	01
51	72603371	STAGE 110-1360-HC	01
52		NOT APPLICABLE	00
53	71807110 K	SLIDER 110 (2 X 1/2)	02
54	71812110 K	LIFTRING 110	01

101	72702441	PISTON S 091-1445-HC	01
102	71875010	PIN ROUND HEAD GROOVED	01
103	71870115 K	O-RING PISTON TOP 091	01
104	71807091 K	SLIDER 091 (2 X 1/2)	01
105	71807091 K	SLIDER 091 (2 X 1/2)	01
106	71870215	O-RING PISTON BOTTOM 091	01
107	71822091	BOTTOM PLATE PISTON 091	01
108	71814091	SNAPRING FOR PISTON 091	01
110	71835091	PISTON EYE SPH. 091 MACHINED	01
111	71875450	SPHERICAL BEARING D.50 MAINT. FREE	01
112	01770560	CIRCLIP GE 50 DO	01

Seal kit complete:

Part no.	Description
71901650 K	Seal kit complete: consists of all packsets with packset grease and O-rings