

HYVA PISTON PUMPS



BENT AXIS TYPE

Hyva

piston pump type :

piston pump 040L - L - 4H

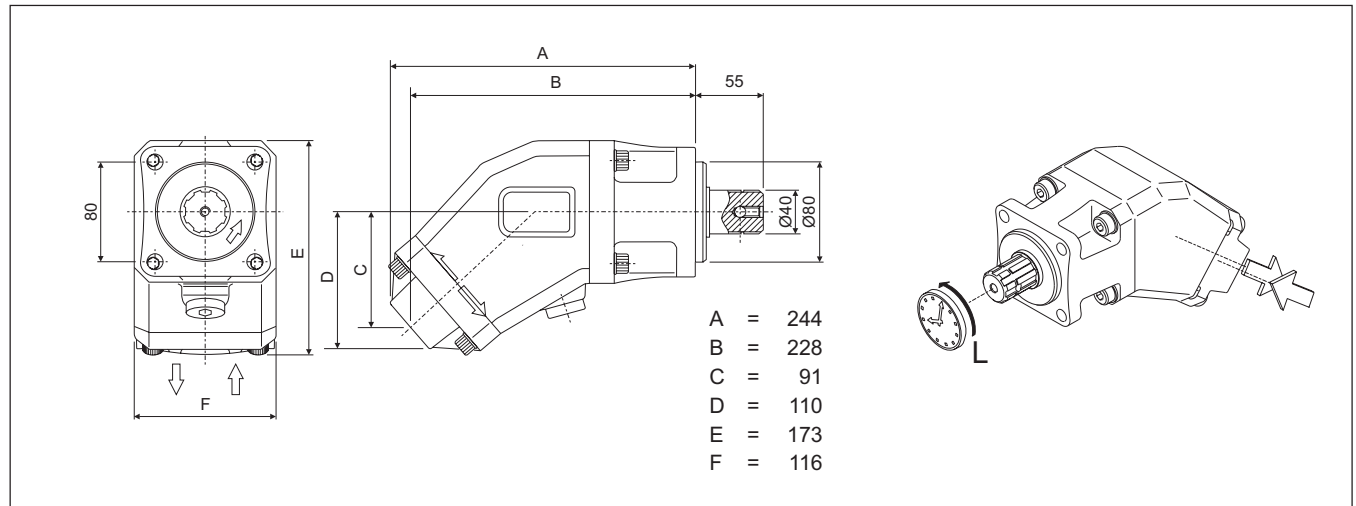
part number :

145 64 605

page # 1 / 2

rotation :

anti clock wise seen from front side of pump

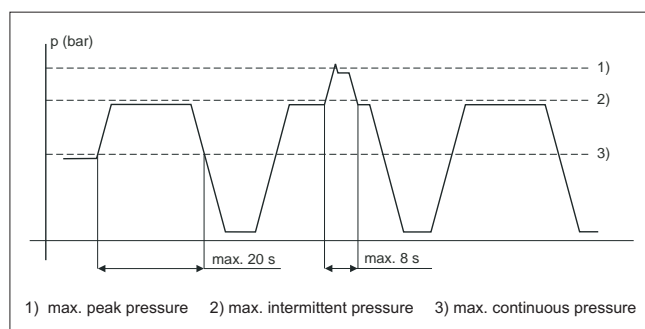


specifications

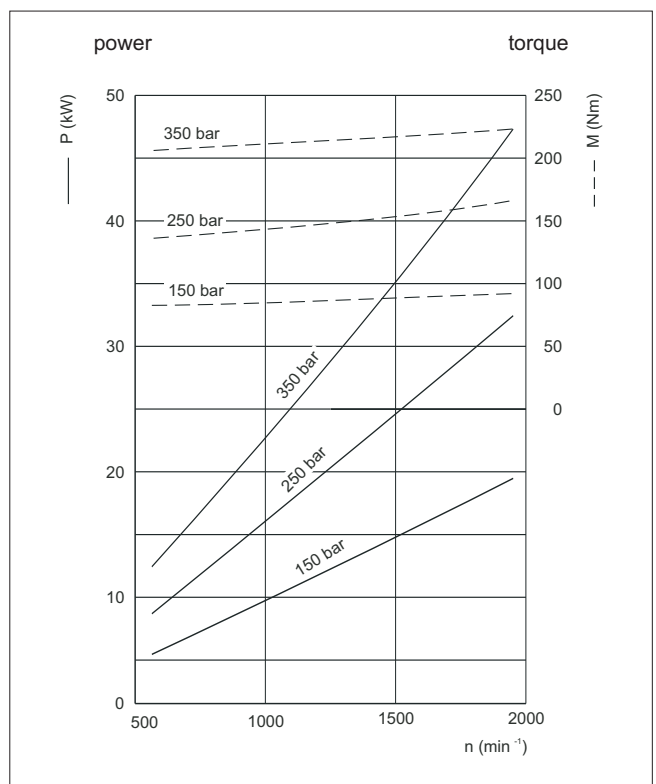
| | | | |
|---|---|----------|--------------------------|
| displacement per revolution | : | 40,9 | cm ³ |
| maximum peak pressure | : | 400 | bar |
| maximum intermittent pressure | : | 350 | bar |
| maximum continuous pressure | : | 280 | bar |
| maximum self priming speed | : | 1850 | min ⁻¹ |
| max. speed at intermittent press. | : | 2500 | min ⁻¹ |
| min. speed at intermittent press. | : | 350 | min ⁻¹ |
| oil temperature range | : | -25 ⇔ 80 | °C |
| inlet pressure range (suction side) | : | 0,85 ⇔ 2 | bar (abs) |
| recommended oil viscosity range | : | 10 ⇔ 400 | mm ² /s (cSt) |
| maximum starting viscosity | : | 1000 | mm ² /s (cSt) |
| filtration : | | | |
| - working pressure < 200 bar | : | 25 | m |
| - working pressure > 200 bar | : | 10 | m |
| connection : | | | |
| - inlet - straight internal thread | : | 1 | " B.S.P. |
| - outlet - straight internal thread | : | 0,75 | " B.S.P. |
| minimum suction hose bore diameter | : | 1,75 | inch |
| shaft DIN 5462 spline | : | 8*32*36 | mm |
| mass | : | 10 | kg |
| noise level at 900 min ⁻¹ and 100 bar | : | 62,3 | dB(A) |
| noise level at 1500 min ⁻¹ and 100 bar | : | 64,8 | dB(A) |

working speed depends on hose size

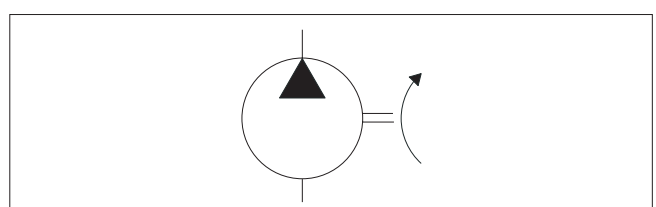
pressure definition



power and torque



hydraulic pump symbol



subject to change without notice

DO-E 14564605 / 03 06 03 / RV A

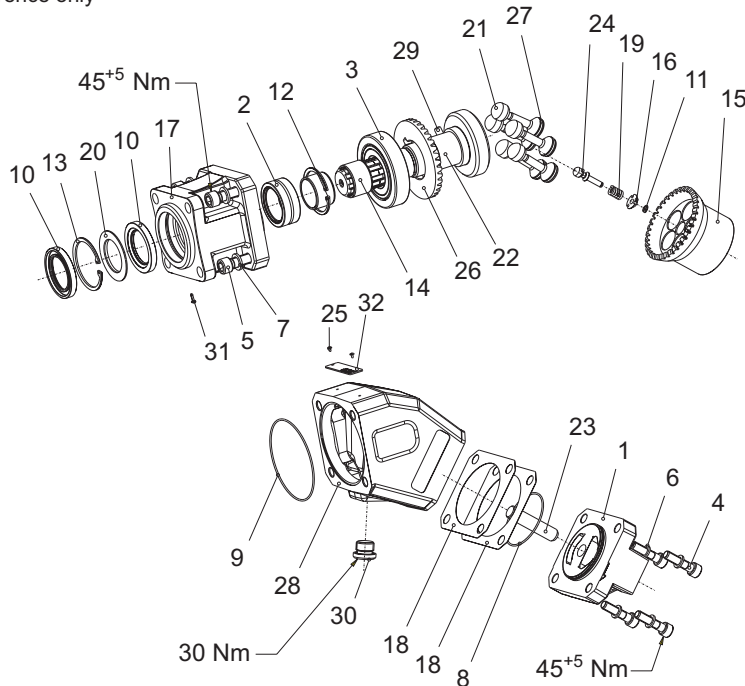
HYVA PISTON PUMPS



BENT AXIS TYPE

| | | |
|--------------|--------------------|--|
| Hyva | piston pump type : | piston pump 040L - L - 4H |
| page # 2 / 2 | part number : | 145 64 605 |
| | rotation : | anti clock wise seen from front side of pump |

drawing for part number reference only



spare part list piston pump 145 64 605

| pos. | code no. | description | qty. |
|------|----------|----------------------|------|
| 1 | | rear cover | 1 |
| 2 | | bearing | 1 |
| 3 | | conic roller bearing | 1 |
| 4 | | screw | 4 |
| 5 | | screw | 4 |
| 6 | | washer | 4 |
| 7 | | washer | 4 |
| 8 | | OR seal | 1 |
| 9 | | OR seal | 1 |
| 10 | | Viton seal | 2 |
| 11 | | circlip | 1 |
| 12 | | circlip | 1 |
| 13 | | circlip | 1 |
| 14 | | ring | 2 |
| 15 | | cylinder block | 1 |
| 16 | | centering lock | 1 |
| 17 | | flange | 1 |
| 18 | | seal side cover | 2 |
| 19 | | centering spring | 1 |
| 20 | | keep plate | 1 |
| 21 | | piston | 5 |
| 22 | | shaft | 1 |
| 23 | | pin | 1 |
| 24 | | dowel pin | 1 |
| 25 | | rivet | 2 |

spare part list piston pump 145 64 605

| pos. | code no. | description | qty. |
|------|------------|--|------|
| 26 | | gear | 1 |
| 27 | | segment | 5 |
| 28 | | pump body | 1 |
| 29 | | dowel pin | 1 |
| 30 | | steel plug | 1 |
| 31 | | protection plug | 1 |
| 32 | | name plate | 1 |
| | 024 70 800 | seal kit (comprises 8, 9, 10, 13 & 20) | 1 |

general information and mounting possibilities.

The mentioned data on page 1 is for mineral based oil.
For other fluids, please contact our engineering dept.

The filtration as mentioned is for tippers only. For different applications we advise filtration according ISO 4406 class 17/14.

To avoid cavitation, the suction hose must be kept as short and straight as possible, and the minimum oil level in the oil tank must be above the inlet of the pump.

The direction of rotation of this pump can be changed by a skilled (hydraulic) engineer.
For information please contact our engineering dept.