

PRESSURE RELIEF VALVE

CYLINDER MOUNTED

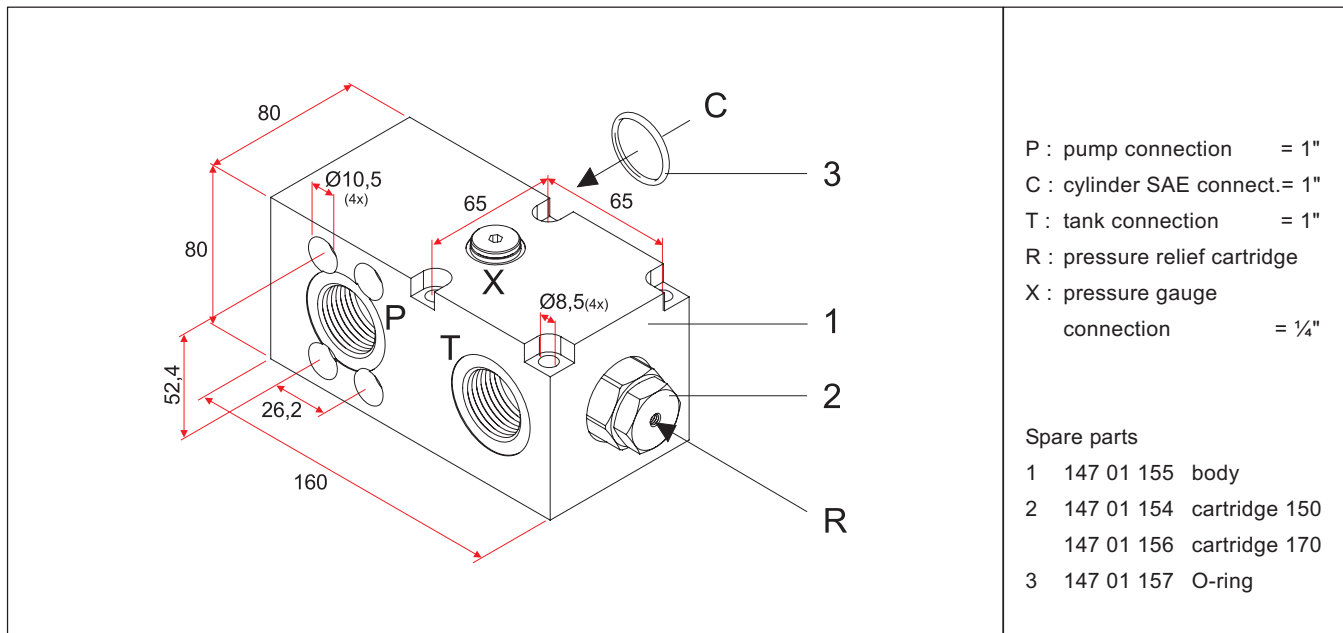


Hyva

tipping valve type:

pressure relief valve CM - SAE

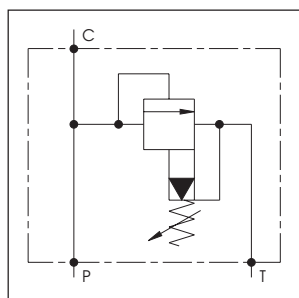
page # 1 / 1



specifications

type	: direct acting pressure relief valve to be mounted on cylinder
hydraulic connections	: G1"
cylinder connection	: 1" SAE
max. working pressure	: 210 bar
max. advised flow	: 150 L/min. (see figure)
filtration	: ≤ 50 µm nominal
oil types	: mineral oil (DIN 51524 / 51525)
viscosity range	: 20 / 150 mm ² /s
temperature range	: -20 / + 90 °C

Hydraulic symbol



general information

general information

- Mount the valve according to the Hyva mounting instructions.
- Use the correct washers and adapters in the ports to prevent housing deformation.
Do not use adapters with tapered threads.
- To further prevent deformation of the valve housing, the mounting plate surface must be completely flat and plane.
- Do not weld to the valve.
- Max. torque for bolts to mount the valve is 20 Nm.

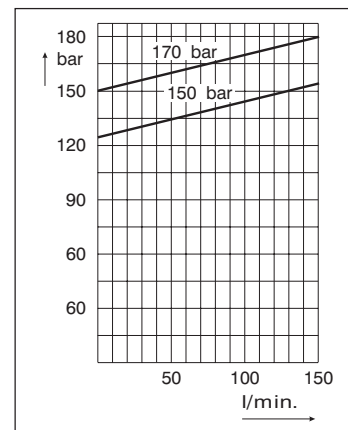
types

part number	description	max. pressure
147 01 130	pressure relief valve CM-SAE	150 bar
147 01 150	pressure relief valve CM-SAE	170 bar

pressure relief valve characteristic

viscosity 45 mm²/s 35°C

This characteristic shows the pressure relief setting in relation to the flow.



repair of the pressure relief valve

The valve should be dismantled in a clean area using the correct tools.

- If the setting of the valve is not according specification; the complete cartridge should be removed (readjusting the valve is not possible)
- If there is some leakage between the cylinder and the valve a new O-ring can be fitted

Clean all parts thoroughly before re-assembling.