

HYVA DIVERTER VALVE



DIVERTER VALVE - PNEUMATIC OPERATING

Hyva

diverting valve type:

diverting valve VDMR

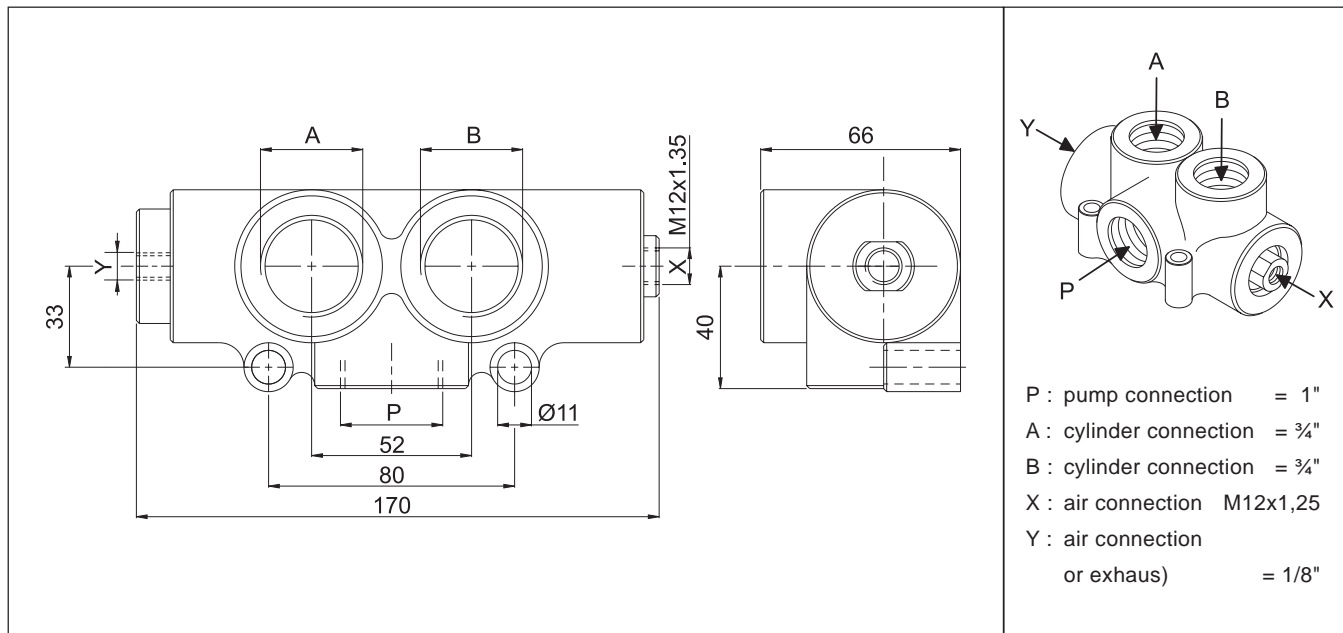
working pressure:

350 bar

page # 1 / 1

part number valve:

147 08 612 H



specifications

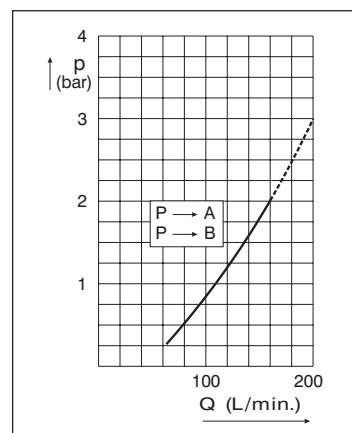
type	: Two position pneumatic controlled diverter valve
hydraulic connections	: G3/4" & G1"
max. working pressure	: 350 bar
max. peak pressure	: 500 bar
max. pneumatic pressure	: 12 bar
max. advised flow	: 160 L/min. (see p-Q characteristic)
filtration	: ≤ 25 μm (ISO 18/13)
oil types	: mineral oil (DIN 51524 / 51525)
viscosity range	: 12 / 100 mm ² /s
temperature range	: -25 / + 80 °C
mass	: 2.6 kg

Δp - Q characteristic

viscosity 30 mm²/s 50°C

This characteristic shows the pressure drop in relation to the flow.

pump to cylinder (P→A) & (P→B)



general information

general information

- This valve has to be normally piloted without oil flow
- The work position has to be selected before operation begins
- Mount the valve according to the Hyva mounting instructions.
- Use the correct washers and adapters in the ports to prevent housing deformation.
Do not use adapters with tapered threads.
- To further prevent deformation of the valve housing, the mounting plate surface must be completely flat and plane.
- Do not weld to the valve.
- Max. torque for bolts to mount the valve is 15 Nm.
- When not used with air pressure on "Y" connection, the hole should be connected to 60 cm free air hose to prevent water to enter air cylinder.

hydraulic symbol

